



Know what's below.  
Call before you dig.

# ELECTRIC SERVICE REQUIREMENTS FOR NEW CONSTRUCTION AND BUILDING DEMOLITION

## Utility Codes and Standards

LIPA's Red Book is a collection of information and specifications, which provide a general guideline to electrical contractors. This guide assures that any work performed involving LIPA's electrical distribution system is completed in a safe and reliable manner. It is available online at [www.lipower.org/commercial/trade](http://www.lipower.org/commercial/trade).

## Residential and Commercial Building Demolitions

For both residential and commercial buildings, your building department will require a letter from the electric and/or gas utility that services have been removed before a demolition permit will be issued to you.

Contact LIPA's Customer Order Fulfillment Department at the appropriate office listed in this brochure.

Minimum requirements to remove electric and gas service to your home or building for the purposes of demolition are:

- Signed and dated letter to LIPA from owner of house or building, requesting removal of electric and gas service. Include in the letter the electric and/or gas service account number and your return address.

## Natural Gas Service

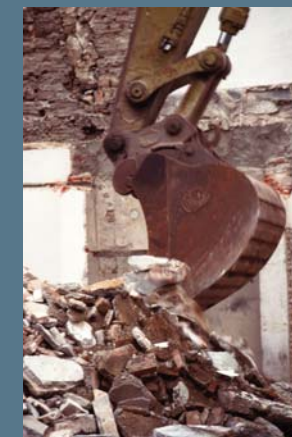
For new or removal of natural gas service in both residential and commercial buildings on Long Island and the Rockaway Peninsula, contact National Grid at 1-877-696-4743.

## Efficiency Built-in

A new home is the perfect opportunity to set a foundation of energy efficiency. LIPA proudly supports the New York ENERGY STAR® Labeled Homes program, which ensures that new ENERGY STAR qualified homes use 30% less energy, provide superior comfort, and are gentler on the environment. And as a builder of energy efficient homes, it can help your business grow through special training, marketing and sales support, and financial incentives.

LIPA's **Commercial Efficiency Program** provides generous incentives, plus technical assistance in support of energy-efficiency measures in commercial new construction.

For more about LIPA's Energy Efficiency programs, call our Infoline at 1-800-692-2626 or visit [www.lipower.org/efficiency](http://www.lipower.org/efficiency).



[www.lipower.org](http://www.lipower.org)

1-800-692-2626

Kevin S. Law  
President & CEO

David A. Paterson  
Governor

*Your Partner on Long Island.*



[www.lipower.org](http://www.lipower.org)

# Electric Service Requirements For New Construction And Building Demolition



## New Construction Contact information

In order to connect new electric service at a new home or commercial building, you must contact LIPA's Customer Order Fulfillment Department at the appropriate number on the right.

Minimum requirements to initiate electric service are:

- Application for electric service (available at [www.lipower.org](http://www.lipower.org))
- Construction completion date
- Anticipated electric service required date
- Home or building Site Plan
- Electric load letter—large residential/all commercial buildings
- Electrical Inspection Certificate

**LIPA does not provide service in Freeport, Rockville Centre, and Greenport. For these communities please contact the following:**

- **Freeport Electric:** (516) 377-2262
- **Rockville Centre Electric:** (516) 678-9357
- **Greenport Electric:** (631) 477-0248

## Nassau/Far Rockaway Peninsula

Albertson . . . . . (516) 545-2242	Hewlett Bay Park (516) 792-7112	Plainview . . . . . (516) 545-2242
Arverne . . . . . (516) 792-7112	Hewlett Harbor . (516) 792-7112	Plandome . . . . . (516) 545-2242
Atlantic Beach . . . (516) 792-7112	Hewlett Neck . . . (516) 792-7112	Plandome Heights(516) 545-2242
Baldwin . . . . . (516) 792-7112	Hicksville . . . . . (516) 545-2242	Plandome Manor(516) 545-2242
Baldwin Harbor . (516) 792-7112	Inwood . . . . . (516) 792-7112	Point Lookout . . (516) 792-7112
Baxter Estates . . . (516) 545-2242	Island Park . . . . (516) 792-7112	Port Washington (516) 545-2242
Bay Park . . . . . (516) 792-7112	Jericho . . . . . (516) 545-2242	Rockaway Beach (516) 792-7112
Bayville . . . . . (516) 545-2242	Jones Beach . . . . (516) 545-2242	Rockaway Park . (516) 792-7112
Belle Harbor . . . . (516) 792-7112	Kensington . . . . (516) 545-2242	Rockaway Point . (516) 792-7112
Bellmore . . . . . (516) 545-2242	Kings Point . . . . (516) 545-2242	Roosevelt . . . . . (516) 792-7112
Bellrose . . . . . (516) 792-7112	Lake Success . . . . (516) 545-2242	Roslyn . . . . . (516) 545-2242
Bethpage . . . . . (516) 545-2242	Lakeview . . . . . (516) 792-7112	Roslyn Estates . . (516) 545-2242
Breezy Point . . . . (516) 792-7112	Lattingtown . . . . (516) 545-2242	Roslyn Harbor . . (516) 545-2242
Brookville . . . . . (516) 545-2242	Laurel Hollow . . . (516) 545-2242	Roslyn Heights . . (516) 545-2242
Carle Place . . . . . (516) 545-2242	Lawrence . . . . . (516) 792-7112	Roxbury . . . . . (516) 792-7112
Cedarhurst . . . . . (516) 792-7112	Levittown . . . . . (516) 545-2242	Russell Gardens . (516) 545-2242
Centre Island . . . . (516) 545-2242	Lido Beach . . . . . (516) 792-7112	Saddle Rock . . . . (516) 545-2242
Cove Neck . . . . . (516) 545-2242	Locust Grove . . . . (516) 545-2242	Sands Point . . . . (516) 545-2242
East Hills . . . . . (516) 545-2242	Locust Valley . . . . (516) 545-2242	Sea Cliff . . . . . (516) 545-2242
East Meadow . . . . (516) 545-2242	Long Beach . . . . . (516) 792-7112	Seaford . . . . . (516) 545-2242
East Norwich . . . . (516) 545-2242	Lynbrook . . . . . (516) 792-7112	Searingtown . . . . (516) 545-2242
East Rockaway . . . (516) 792-7112	Malverne . . . . . (516) 792-7112	Syosset . . . . . (516) 545-2242
East Williston . . . (516) 545-2242	Manhasset . . . . . (516) 545-2242	Thomaston . . . . . (516) 545-2242
Edgemere . . . . . (516) 792-7112	Manorhaven . . . . (516) 545-2242	Uniondale . . . . . (516) 792-7112
Elmont . . . . . (516) 792-7112	Massapequa . . . . (516) 545-2242	Valley Stream . . . . (516) 792-7112
Far Rockaway . . . . (516) 792-7112	Massapequa Park(516) 545-2242	Wantagh . . . . . (516) 545-2242
Farmingdale . . . . (516) 545-2242	Meadowmere	West Hempstead . (516) 792-7112
Floral Park . . . . . (516) 792-7112	Park . . . . . (516) 792-7112	Westbury . . . . . (516) 545-2242
Floral Park . . . . . (516) 545-2242	Merrick . . . . . (516) 545-2242	Williston Park . . . (516) 545-2242
Flower Hill . . . . . (516) 545-2242	Mill Neck . . . . . (516) 545-2242	Woodbury . . . . . (516) 545-2242
Franklin Square . . (516) 792-7112	Mineola . . . . . (516) 545-2242	Woodmere . . . . . (516) 792-7112
Garden City . . . . . (516) 792-7112	Munsey Park . . . . (516) 545-2242	Woodsburgh . . . . (516) 792-7112
Garden City Park (516) 545-2242	Muttontown . . . . (516) 545-2242	
Garden City South(516) 792-7112	Neponsit . . . . . (516) 792-7112	
Glen Cove . . . . . (516) 545-2242	New Hyde Park . . (516) 545-2242	
Glen Head . . . . . (516) 545-2242	North Hills . . . . . (516) 545-2242	
Glenwood Landing(516) 545-2242	North Woodmere(516) 792-7112	
Great Neck . . . . . (516) 545-2242	Oceanside . . . . . (516) 792-7112	
Great Neck Estates(516) 545-2242	Old Bethpage . . . (516) 545-2242	
Great Neck Plaza . (516) 545-2242	Old Brookville . . (516) 545-2242	
Greenvale . . . . . (516) 545-2242	Old Westbury . . . (516) 545-2242	
Hempstead . . . . . (516) 792-7112	Oyster Bay . . . . . (516) 545-2242	
Herricks . . . . . (516) 545-2242	Oyster Bay Cove . (516) 545-2242	
Hewlett . . . . . (516) 792-7112	Plainedge . . . . . (516) 545-2242	

## Suffolk

Amagansett . . . . . (631) 548-7042	Great River . . . . (631) 348-6044	Orient . . . . . (631) 548-7042
Amityville . . . . . (631) 348-6044	Greenlawn . . . . . (631) 348-6044	Orient Point . . . . (631) 548-7042
Aquebogue . . . . . (631) 548-7042	Greenport . . . . . (631) 548-7042	Patchogue . . . . . (631) 548-7042
Asharoken . . . . . (631) 348-6044	Halesite . . . . . (631) 348-6044	Peconic . . . . . (631) 548-7042
Babylon . . . . . (631) 348-6044	Half Hollow Hills (631) 348-6044	Poquott . . . . . (631) 548-7042
Baiting Hollow . . . (631) 548-7042	Hampton Bays . . (631) 548-7042	Port Jefferson . . . . (631) 548-7042
Bayport . . . . . (631) 348-6044	Hauppauge . . . . (631) 348-6044	Port Jefferson
Bayshore . . . . . (631) 348-6044	Head of Harbor . (631) 348-6044	Station . . . . . (631) 548-7042
Belle Terre . . . . . (631) 548-7042	Holbrook . . . . . (631) 348-6044	Quogue . . . . . (631) 548-7042
Bellport . . . . . (631) 548-7042	Holtsville . . . . . (631) 548-7042	Remsenburg . . . . . (631) 548-7042
Blue Point . . . . . (631) 548-7042	Huntington . . . . (631) 348-6044	Riverhead . . . . . (631) 548-7042
Bohemia . . . . . (631) 348-6044	Huntington Bay . (631) 348-6044	Rocky Point . . . . . (631) 548-7042
Brentwood . . . . . (631) 348-6044	Huntington	Ronkonkoma . . . . . (631) 348-6044
Bridgehampton . . . (631) 548-7042	Station . . . . . (631) 348-6044	S. Setauket . . . . . (631) 548-7042
Brightwaters . . . . (631) 348-6044	Islandia . . . . . (631) 348-6044	Sag Harbor . . . . . (631) 548-7042
Brookhaven . . . . . (631) 548-7042	Islip . . . . . (631) 348-6044	San Remo . . . . . (631) 348-6044
Calverton . . . . . (631) 548-7042	Islip Terrace . . . (631) 348-6044	Sayville . . . . . (631) 348-6044
Cedar Beach . . . . . (631) 548-7042	Jamesport . . . . . (631) 548-7042	Selden . . . . . (631) 548-7042
Center Moriches . (631) 548-7042	Kings Park . . . . (631) 348-6044	Setauket . . . . . (631) 548-7042
Centereach . . . . (631) 548-7042	Lake Grove . . . . (631) 348-6044	Shelter Island . . . . (631) 548-7042
Centerport . . . . . (631) 348-6044	Lake Grove . . . . (631) 548-7042	Shinnecock . . . . . (631) 548-7042
Central Islip . . . . (631) 348-6044	Lake	Shirley . . . . . (631) 548-7042
Cold Spring	Ronkonkoma . . . (631) 348-6044	Shoreham . . . . . (631) 548-7042
Harbor . . . . . (631) 348-6044	Laurel . . . . . (631) 548-7042	Smithtown . . . . . (631) 348-6044
Commack . . . . . (631) 348-6044	Lindenhurst . . . . (631) 348-6044	Sound Beach . . . . (631) 548-7042
Copiam . . . . . (631) 348-6044	Manorville . . . . (631) 548-7042	South Haven . . . . . (631) 548-7042
Coram . . . . . (631) 548-7042	Mastic . . . . . (631) 548-7042	Southampton . . . . (631) 548-7042
Cutchogue . . . . . (631) 548-7042	Mastic Beach . . . (631) 548-7042	Southhold . . . . . (631) 548-7042
Deer Park . . . . . (631) 348-6044	Mattituck . . . . . (631) 548-7042	Speonk . . . . . (631) 548-7042
Dix Hills . . . . . (631) 348-6044	Medford . . . . . (631) 548-7042	St James . . . . . (631) 348-6044
East Farmingdale(631) 348-6044	Melville . . . . . (631) 348-6044	Stony Brook . . . . . (631) 548-7042
East Hampton . . . (631) 548-7042	Middle Island . . (631) 548-7042	Terryville . . . . . (631) 548-7042
East Islip . . . . . (631) 348-6044	Miller Place . . . (631) 548-7042	Tiana . . . . . (631) 548-7042
East Marion . . . . (631) 548-7042	Montauk . . . . . (631) 548-7042	W. Babylon . . . . . (631) 348-6044
East Moriches . . . (631) 548-7042	Moriches . . . . . (631) 548-7042	W. Islip . . . . . (631) 348-6044
East Northport . . (631) 348-6044	Mount Sinai . . . . (631) 548-7042	W. Sayville . . . . . (631) 348-6044
East Patchogue . . (631) 548-7042	N. Amityville . . . . (631) 348-6044	Wading River . . . . (631) 548-7042
East Quogue . . . . (631) 548-7042	N. Babylon . . . . . (631) 348-6044	Wainscott . . . . . (631) 548-7042
East Setauket . . . (631) 548-7042	N. Lindenhurst . . (631) 348-6044	Watermill . . . . . (631) 548-7042
Eastport . . . . . (631) 548-7042	Nesconset . . . . . (631) 348-6044	Westhampton . . . . (631) 548-7042
Eatons Neck . . . . (631) 348-6044	Nissequoque . . . . (631) 348-6044	Westhampton
Elwood . . . . . (631) 348-6044	Northport . . . . . (631) 348-6044	Beach . . . . . (631) 548-7042
Farmingville . . . . (631) 548-7042	Northville . . . . . (631) 548-7042	Wheatly Heights . . (631) 348-6044
Flanders . . . . . (631) 548-7042	Oakdale . . . . . (631) 348-6044	Wyandanch . . . . . (631) 348-6044
Ft Salonga . . . . . (631) 348-6044	Old Field . . . . . (631) 548-7042	Yaphank . . . . . (631) 548-7042